



19120 Co Rd 10, Corcoran, MN

- 3.29 Acres
- Corcoran, MN
- Sewer & Water
- Mixed Use Site
- ½ Mile from Hyvee
- Growing Area
- Price: Submit



For more information on this property or other available properties please contact:

Greg Hayes

Office: 763.498.7844

Cell: 612.581.7029

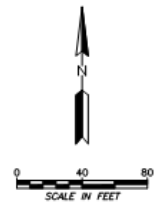
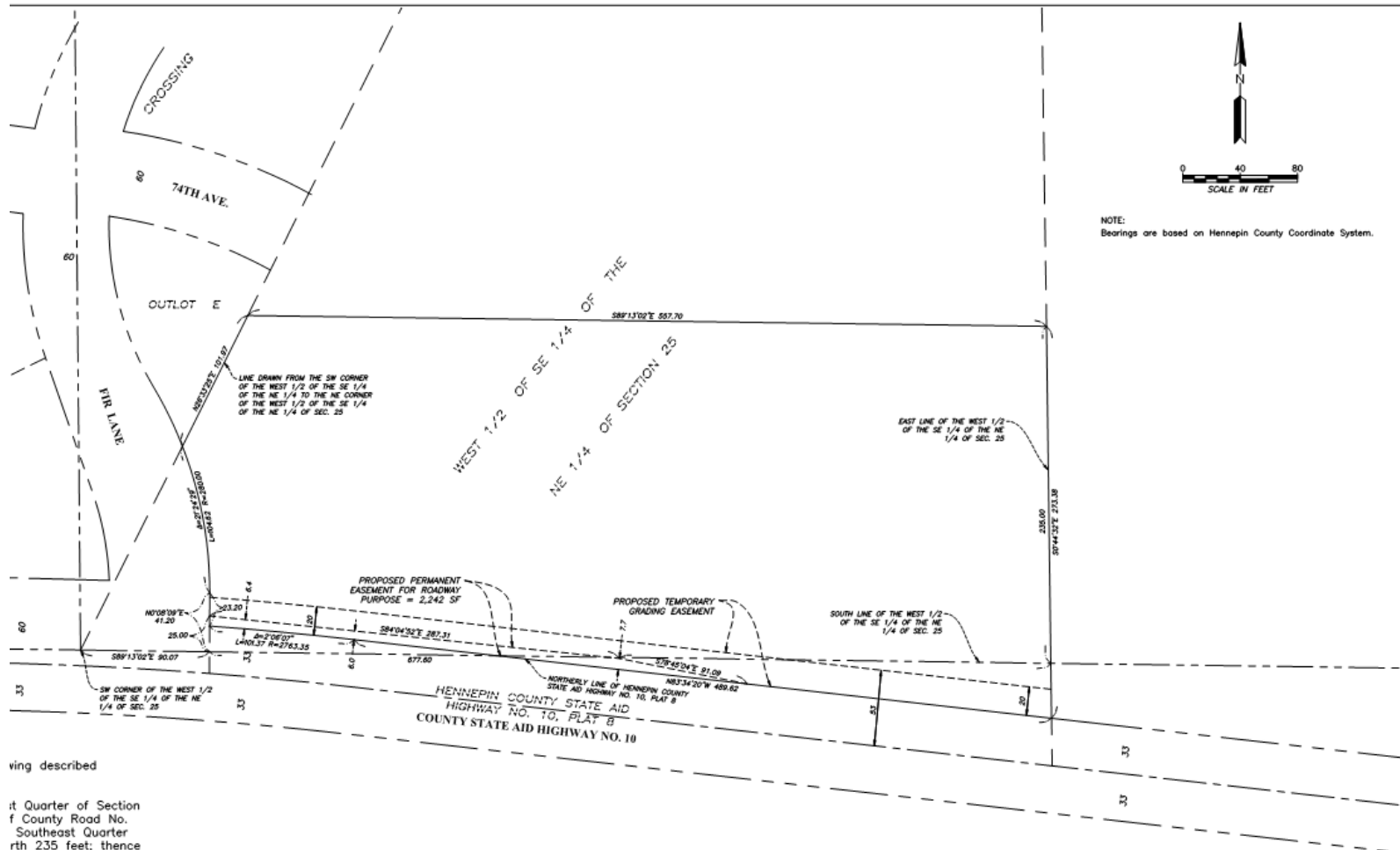
ghayes@ebertconst.com

www.ebertconst.com



EBERT
CONSTRUCTION

19120 Co Rd 10, Corcoran, MN



NOTE:
Bearings are based on Hennepin County Coordinate System.

ving described
it Quarter of Section
f County Road No.
Southeast Quarter
rth 235 feet; thence