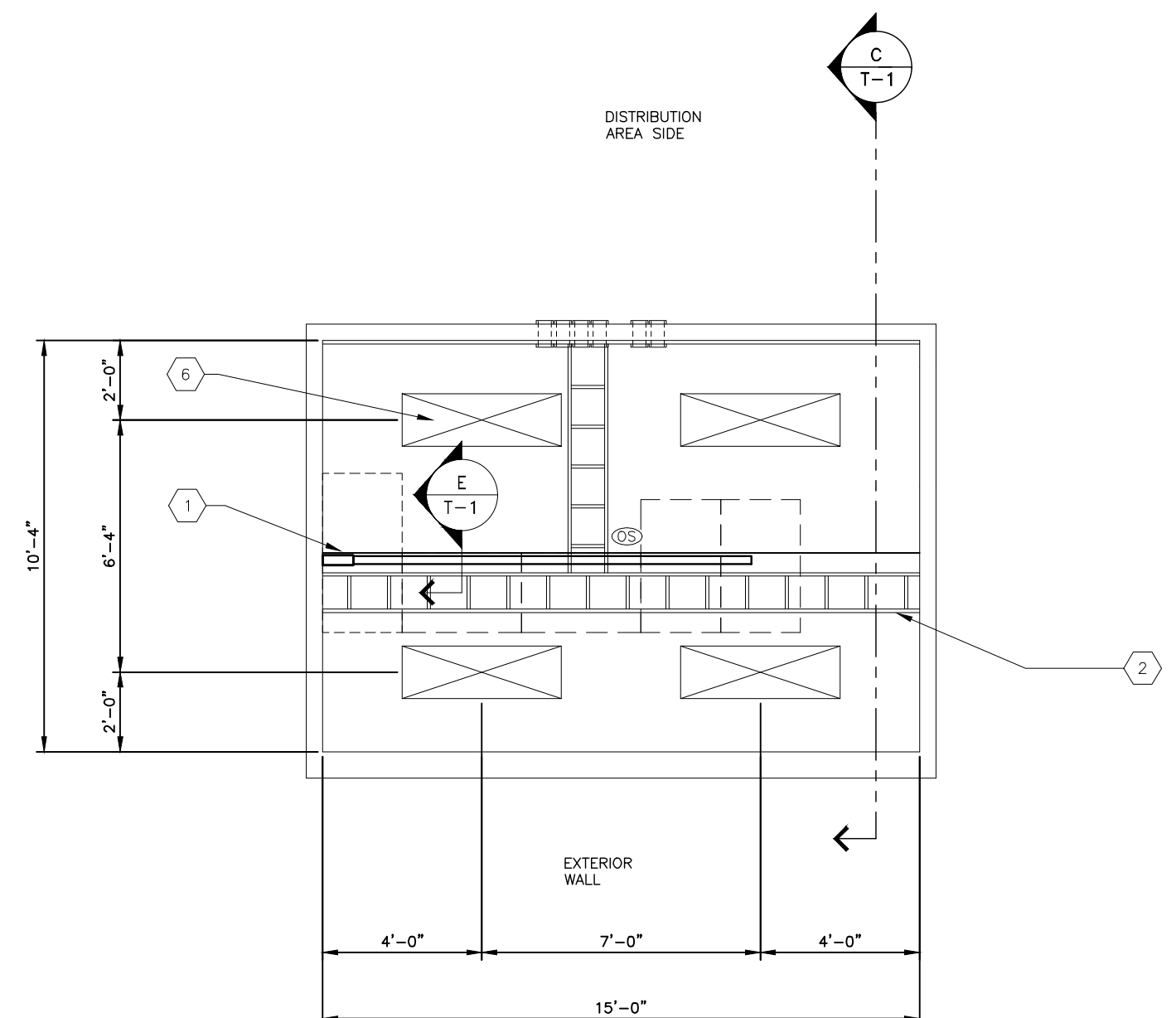
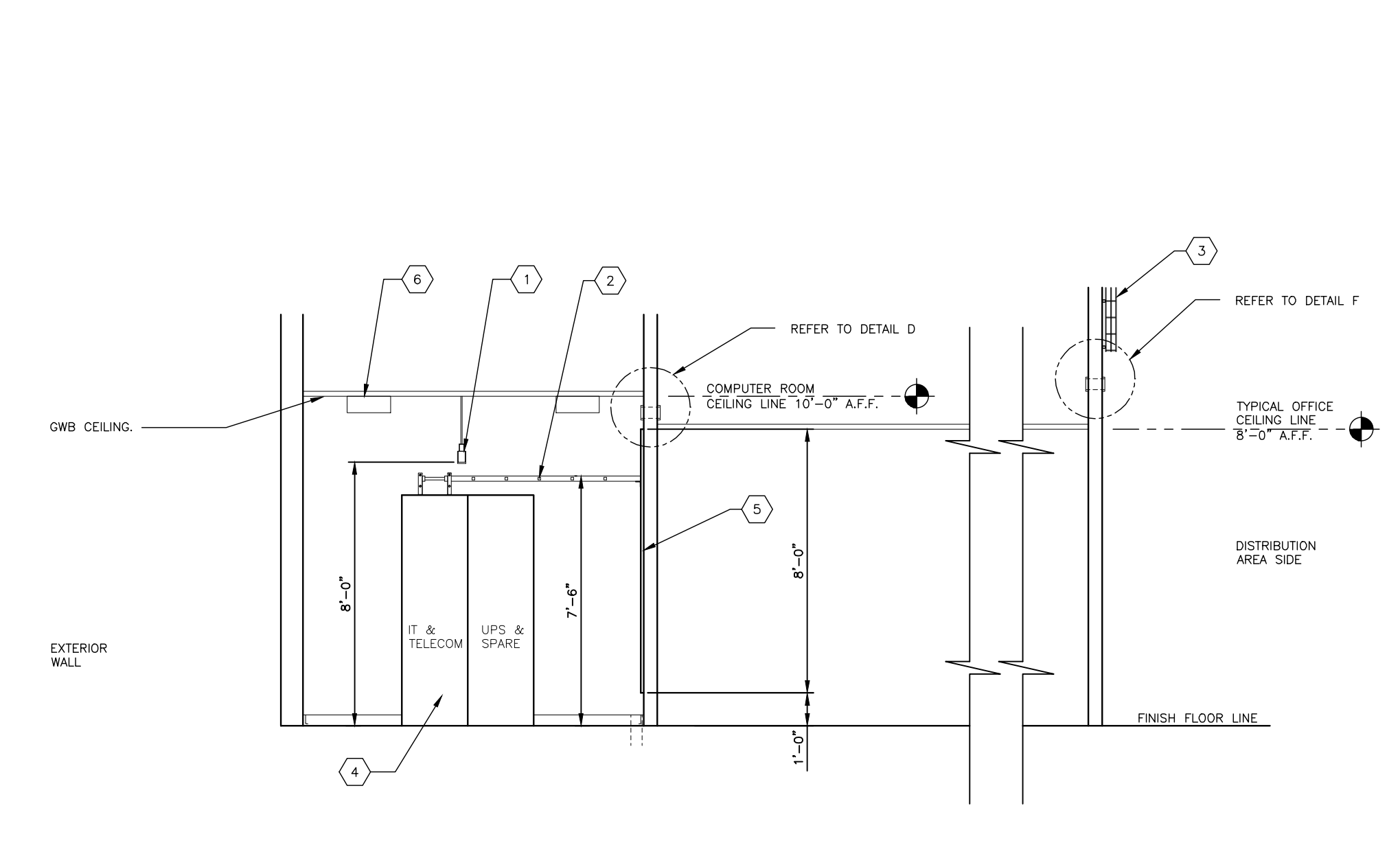


A FLOOR PLAN – MANUAL STATION 25 TO 96 VAN FACILITIES
 SCALE: 1/4"=1'-0"
 FLOOR SPACE = 155 SF
 (FOR REFERENCE ONLY)
 (REFER TO OFFICE PLAN FOR ACTUAL DOOR LOCATION)

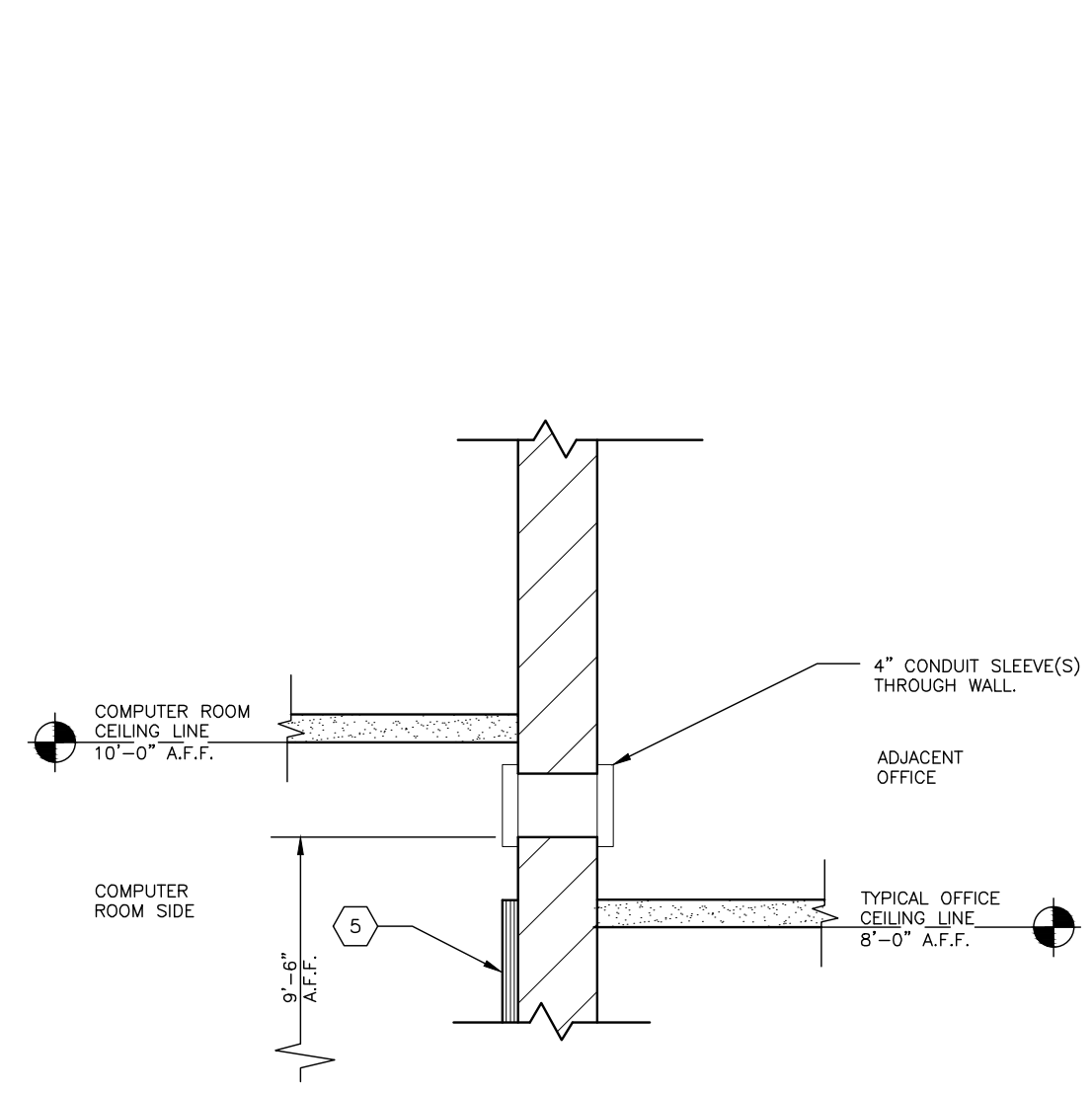


B REFLECTED CEILING PLAN
 SCALE: 1/4"=1'-0"
 (FOR REFERENCE ONLY)

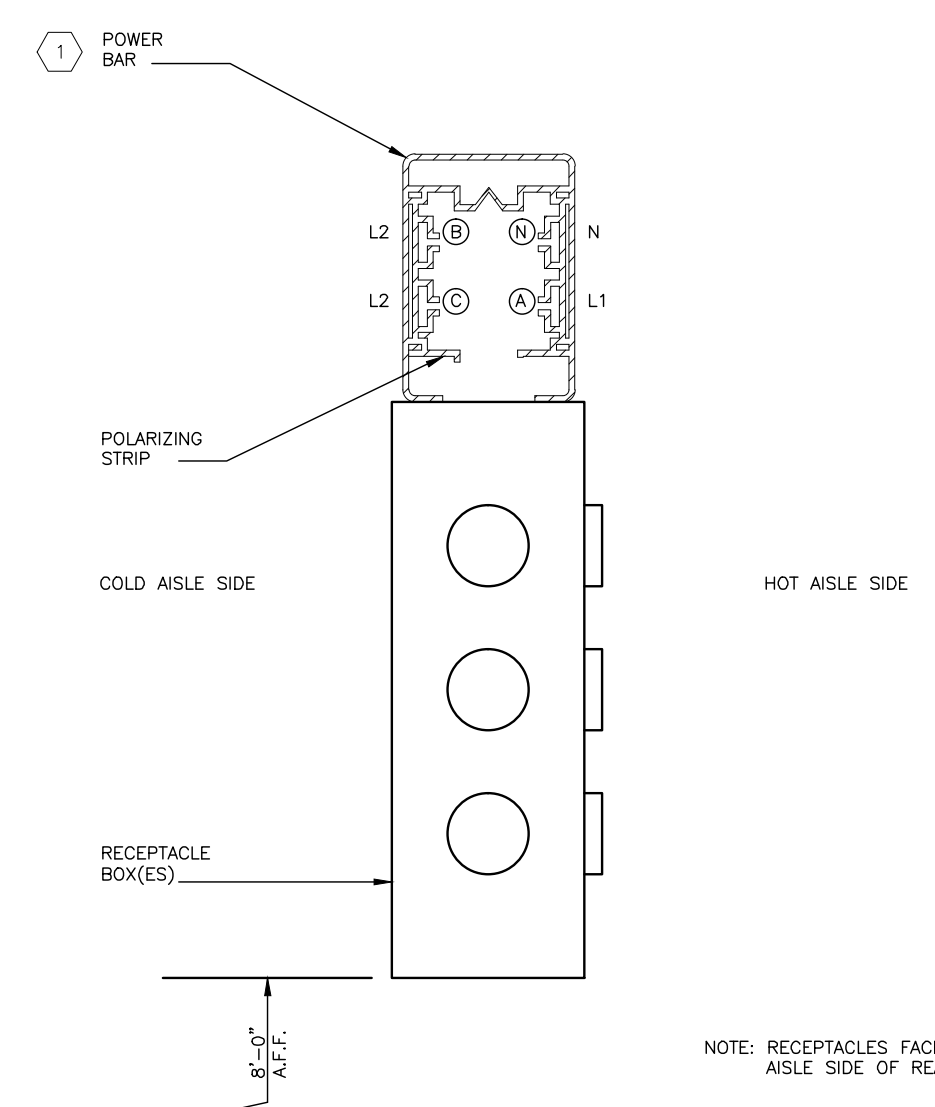


C SECTION
 SCALE: 1/4"=1'-0"
 (FOR REFERENCE ONLY)

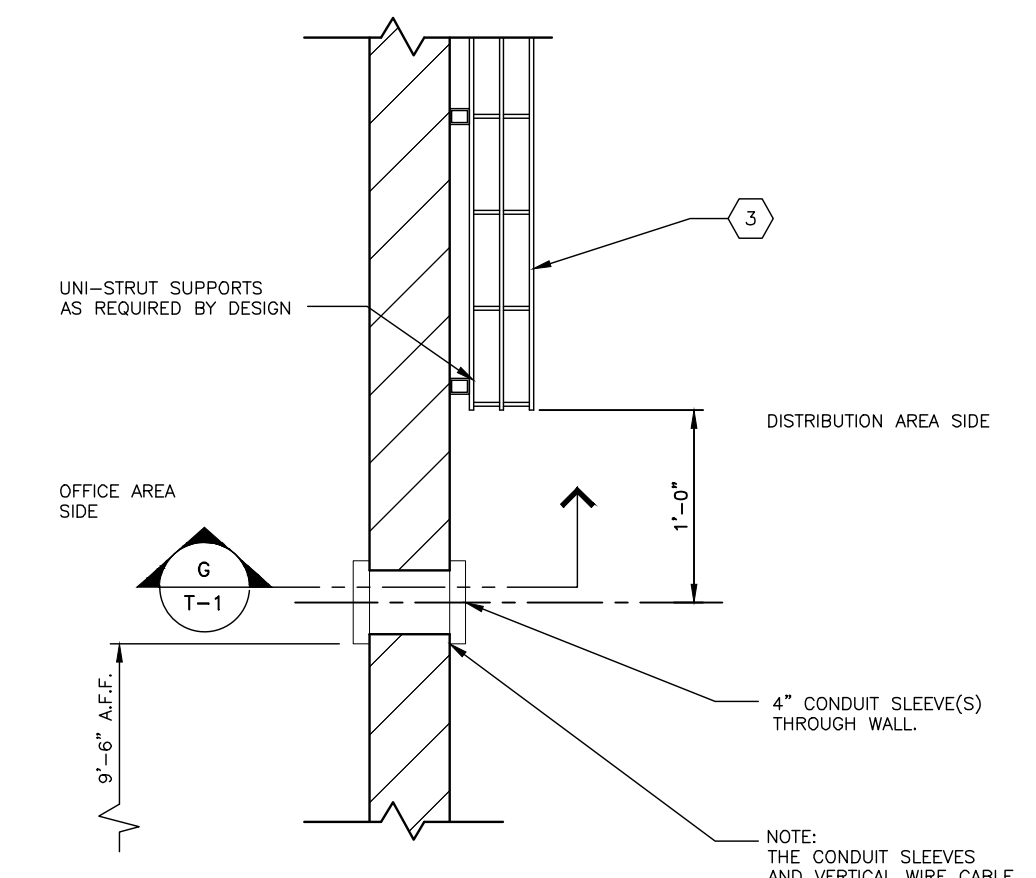
- KEY NOTES:**
- PART NUMBER: PWBKVA - SE - SLBW 2X5 - GPP - FXG
 POWERWARE 6 KVA SINGLE PHASE UPS UNIT.
 PART NUMBER INCLUDES THE FOLLOWING COMPONENTS:
 POWERWARE PWB170 UPS, 6 KVA, 208-270V, 208-240 V, OUTPUT.
 STARLINE BUSWAY - TWO SECTIONS AT 5'-0" EACH.
 4-DUPLEX 5-20 RECEPTACLES
 2-16-30 RECEPTACLES - CANNOT BE BLACK/RED PHASE.
 END CAPS, END POWER FEED, MOUNTING BOLTS, SIMP/WBS ADAPTER & ENVIRONMENTAL MONITOR.
 POWERWARE, AND ALL COMPONENTS REQUIRED FOR A COMPLETE INSTALLATION.
 START UP SERVICES AND WARRANTY.
 APPROVED SUPPLIER:
 R.M. STOOFF AND ASSOCIATES
 CONTACT: JAMES STOOFF, 412-367-9006
 FURNISHED AND INSTALLED BY THE LESSOR/LESSOR'S AGENT
 - LADDER RACKS, 12" WIDTH, BY DAMAC PRODUCTS, INC. MANUFACTURER'S STANDARD BLACK FINISH. LENGTHS AS REQUIRED BY DESIGN. FURNISHED AND INSTALLED BY FXG.
 - 4" DEEP X 12" WIDE VERTICAL WIRE CABLE TRAY. PART NUMBER FT4X12X10 BY COOPER B-LINE OR FXG APPROVED EQUAL.
 SUPPORT VERTICAL WIRE CABLE TRAY WITH UNI-STRUT MEMBERS AS REQUIRED BY DESIGN.
 VERTICAL WIRE CABLE TRAY INSTALLATION SHALL BEGIN AT 12 INCHES ABOVE THE 4" CONDUIT SLEEVES AND SHALL BE INSTALLED VERTICALLY UP TO, AND ATTACHED TO, THE BUILDING ROOF SUPPORT STEEL.
 - RACKS AND SERVERS FURNISHED AND INSTALLED BY FXG.
 - ALL PLYWOOD BACKBOARDS SHALL BE 3/4"x48"x96" FIRE RESISTANT A/O RATED PLYWOOD MOUNTED 1'-0" AFF. MOUNT WITH "A" SIDE FACING ROOM. PAINT BOTH SIDES AND ALL EDGES OF PLYWOOD WITH A MINIMUM OF 2 COATS APPLIED PER MANUFACTURERS RECOMMENDATIONS. REFER TO SPECIFICATIONS FOR PAINT COLOR. PAINTING SHALL BE COMPLETED PRIOR TO THE INSTALLATION OF ANY COMMUNICATIONS HARDWARE OR EQUIPMENT. COVER THE LENGTH OF WALL SHOWN. MOUNT 8" DIMENSION VERTICALLY (TYP). FURNISHED AND INSTALLED BY LESSOR/LESSOR'S AGENT.
 - CEILING MOUNTED LIGHT FIXTURE, REFER TO SPECIFICATIONS.



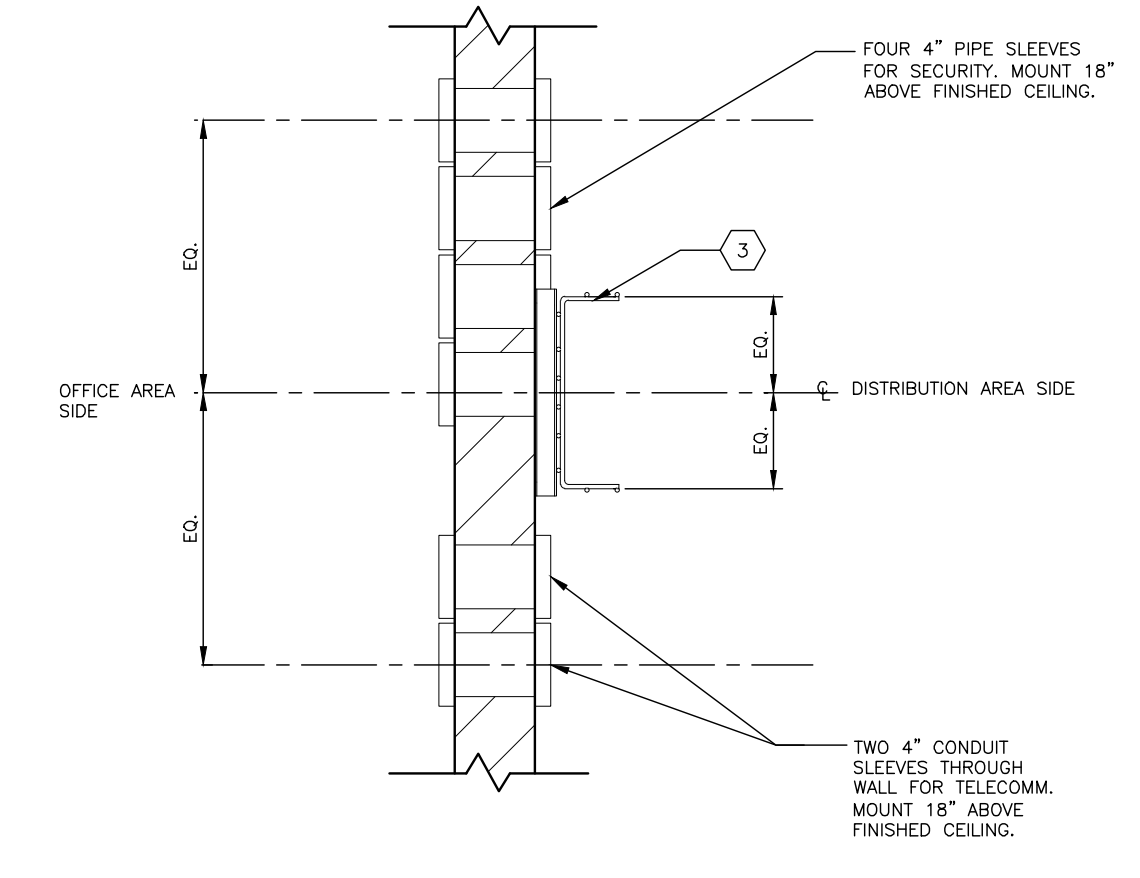
D DETAIL AT COMPUTER ROOM WALL/ OFFICE WALL
 SCALE: 1"=1'-0"



E POWER SUPPLY BAR SECTION TYP.
 SCALE: 6"=1'-0"



F DETAIL AT DISTRIBUTION CENTER/ OFFICE WALL
 SCALE: 1"=1'-0"



G SECTION
 SCALE: 1"=1'-0"

- LEGEND:**
- △ LOCATION OF FLUSH SINGLE GANG TELEPHONE OUTLET WITH 3/4" CONDUIT W/PULL WIRE TO ACCESSIBLE CEILING SPACE. TERMINATE CONDUITS WITH PLASTIC BUSHINGS. INSTALL COVER PLATES AT ALL LOCATIONS. (TYP).
 - ▲ CONDUIT W/PULL WIRE FROM TELEPHONE BOARD TO OFFICE CEILING SPACE, SIZE AS NOTED.
 - JUNCTION BOX W/20 AMP DEDICATED CIRCUIT TO A LOCKABLE BREAKER. LABEL BOX W/BREAKER AND PANEL.
 - ⊕ SPECIAL LOCATION DUPLEX RECEPTACLES, OTHERS NOT SHOWN ON PLAN.
 - DUPLEX RECEPTACLE ON DEDICATED CIRCUIT.
 - FE FIRE EXTINGUISHER WITH SURFACE MOUNTED BRACKET.
 - ⌘ WALL LIGHT SWITCH.
 - ⊙ LINE VOLTAGE PASSIVE INFRARED OCCUPANCY SENSOR FOR ROOM LIGHTING CONTROL. WATSTOPPER # G-355 OR EQUAL.
- GENERAL NOTES:**
- CONNECT RECEPTACLE CIRCUITS FOR CONVENIENCE. OUTLETS TO NEAREST AVAILABLE NORMAL BUILDING CIRCUIT.
 - NO PIPING, DUCTWORK, WIRING, ETC. TO BE ROUTED THROUGH THE COMPUTER ROOM.
 - ROOM CONSTRUCTION, AS REQUIRED BY CODE.
 A. 36" DOOR TO BE PROVIDED WITH SECURITY LOCK, REFER TO DOOR SCHEDULE FOR MORE INFORMATION.
 B. PROVIDE INSULATION IN WALLS AND CEILING TO MEET ASHRAE 90.1-2004 AS A MINIMUM.
 C. PROVIDE ROOM WITH VAPOR RETARDER.
 - COMBINATION SMOKE/HEAT DETECTORS AS REQUIRED BY CODE. FURNISHED AND INSTALLED BY LESSOR/LESSOR'S AGENT.
 - FIRE SUPPRESSION SYSTEM SHALL BE PROVIDED IN THE COMPUTER ROOM AS REQUIRED BY CODE. REFER TO FXG SPECIFICATION DIVISION 15 MECHANICAL, SECTION 15.1 PLUMBING.
 - REFER TO THE SPECIFICATIONS FOR THE DESIGN CRITERIA FOR BTU RATINGS AND ALTERNATE HVAC UNIT LOCATION.

NOT FOR CONSTRUCTION
 This is a progress drawing intended for information only, and shall not be used for construction purposes. The Construction Documents, prepared by other shall address all applicable local, state, and federal codes and regulations. For FXG leased facilities the Construction Documents shall be the responsibility of the Lessor/Lessor's Agent. For FXG owned facilities the Construction Documents shall be the responsibility of the Architect/Engineer of Record.

Rev.	Date	Revised Items	Dr.	D.E.

MS
 W T S Inc.

FedEx
 Ground
CO-LOCATION

Location: **ROCHESTER**
 Project: **CY13 SPINOFF**
 Title: **COMPUTER ROOM**
 State or Province: **MN**
 Scale: **AS NOTED** Drawn By: **DLB** Checked By: **JBK**
 Date: **12/21/11** Design Eng: **Master** File No: **SCHUMANN BUSINESS PARK**
STEWARTVILLE, MN 55976

Sheet No: **T-1**
 Drawing Number: **559-F-038**
 Revision: