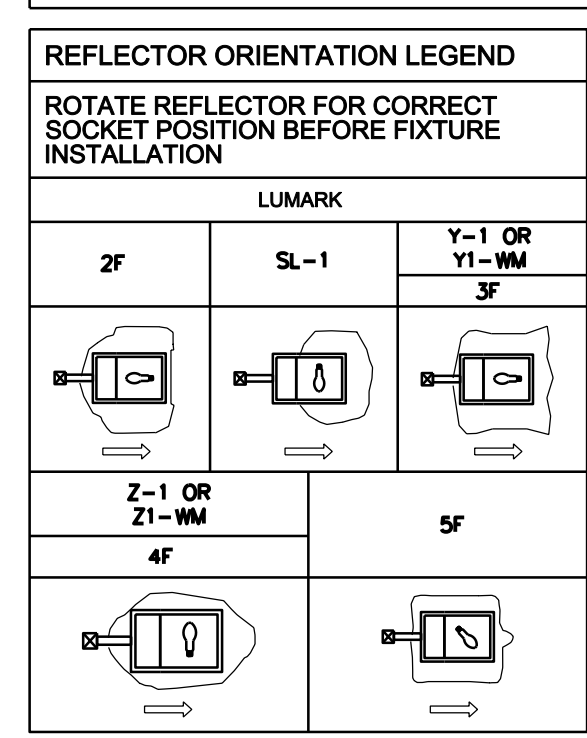


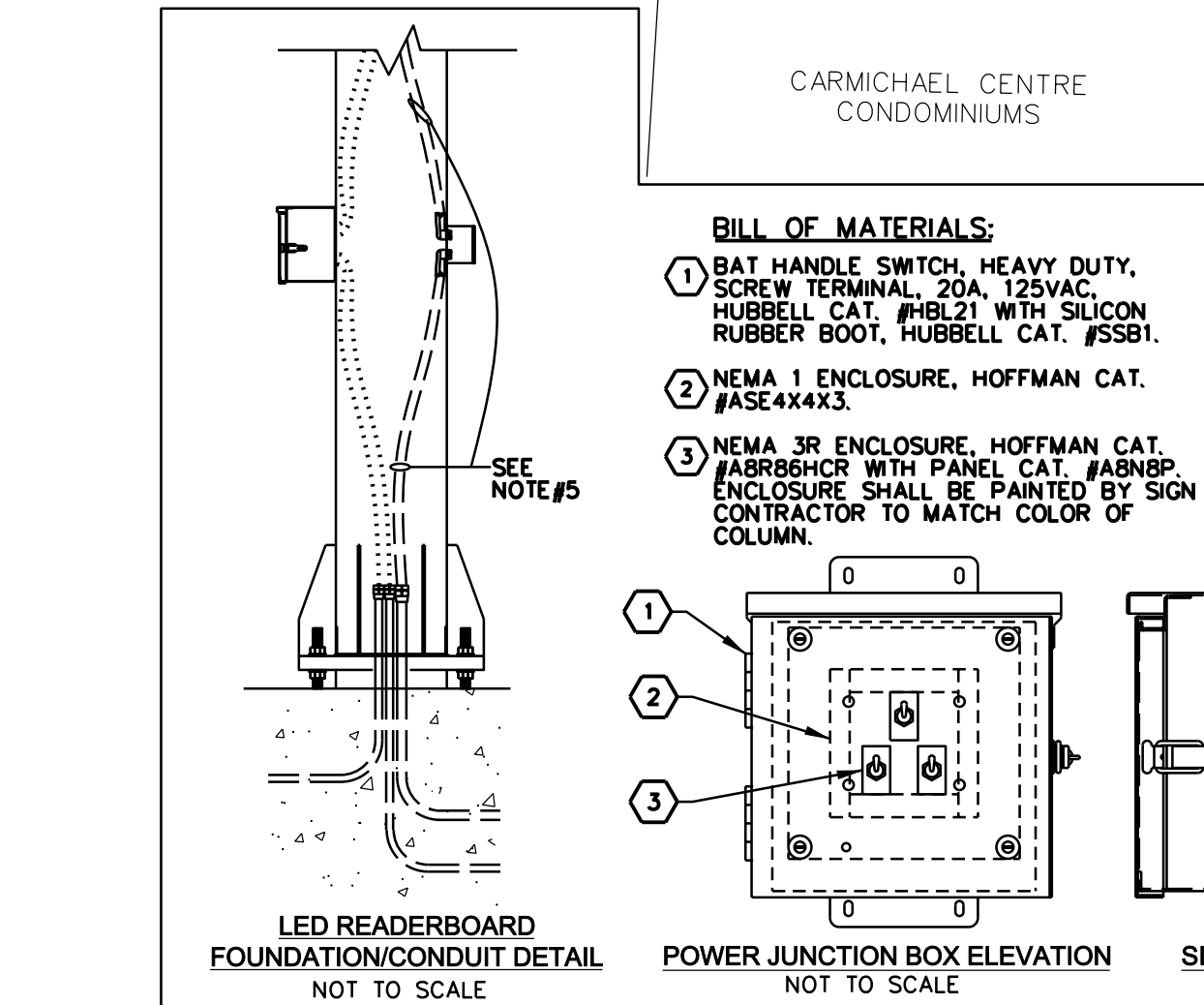
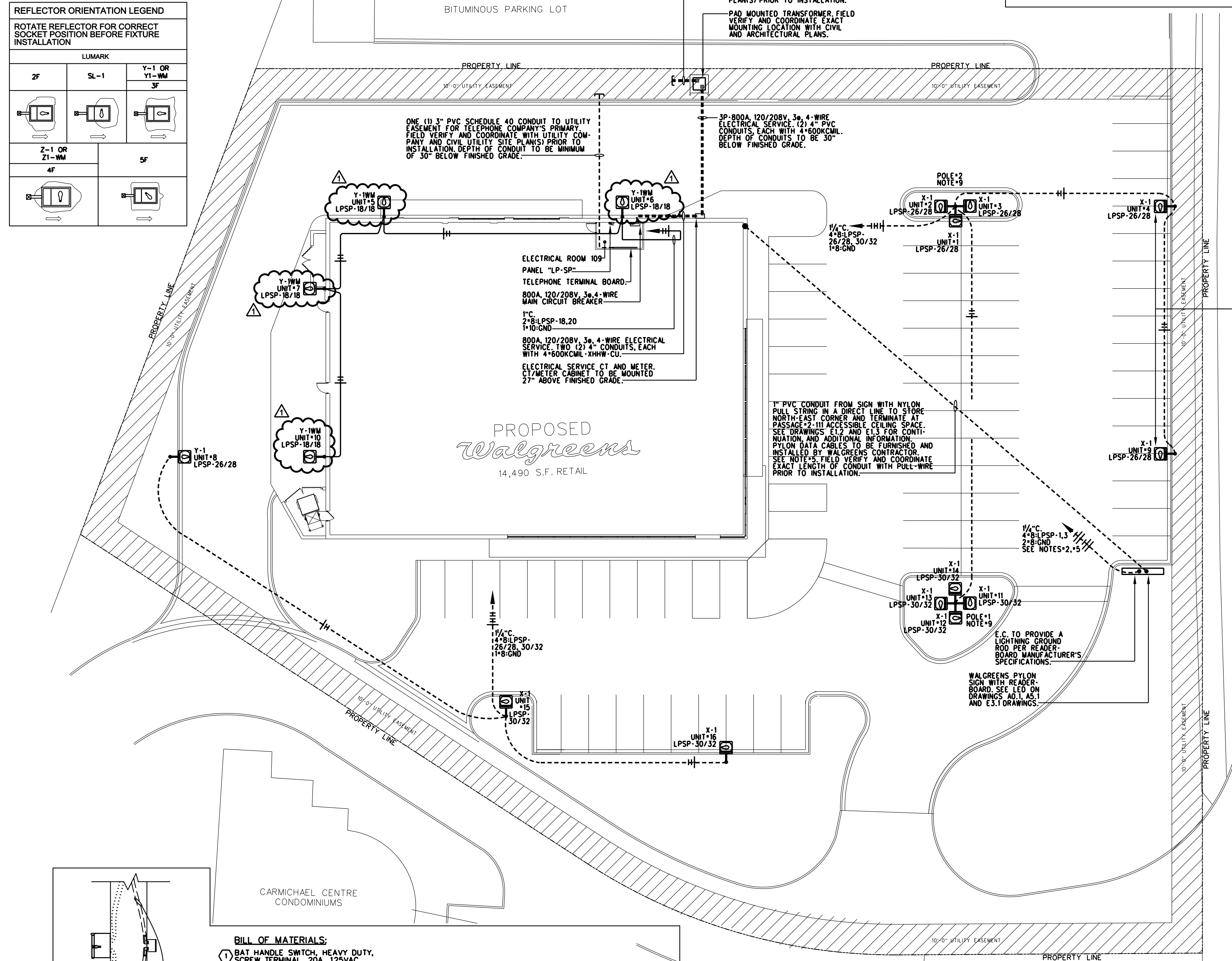
PRIMARY PANEL ELECTRICAL DATA					
LAMPS	BALLAST	AMPS	V.A.	CIRCUITS	PANEL CIRCUIT#
(16) F/60/T-12 CWHO (GE)	(3) ESB848-46 (SIGNA)	10.23	1,224	(1)-20AMP, 120V	LPSP, CKT # 1

DURING INSTALLATION OF SITE LIGHTING LUMINAIRES, REFER TO DRAWING E0.1A FOR CORRECT REFLECTOR ORIENTATION AND INSTALLATION INSTRUCTIONS.

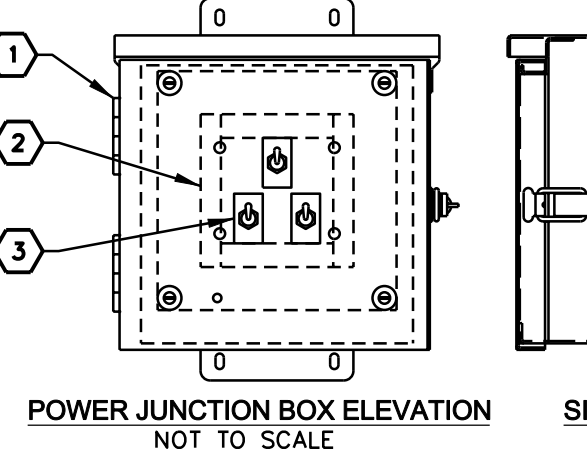


DAKTRONICS LED READERBOARD PANEL ELECTRICAL DATA					
OPTION	DESCRIPTION	WATTS (SEE NOTE 1)		CIRCUITS	PANEL CIRCUIT#
		PER FACE	PER SIGN		
1	2'-8" x 8'-8"	310	620	(1)-20 AMP, 120V (PER SIGN)	LPSP, CKT # 3

**NOTES:**  
 1. LED SOLID RED, (THERE ARE TWO(2) FACES ON A TYPICAL READERBOARD)  
 2. PROVIDE MINIMUM #10AWG NEUTRAL CONDUCTOR.

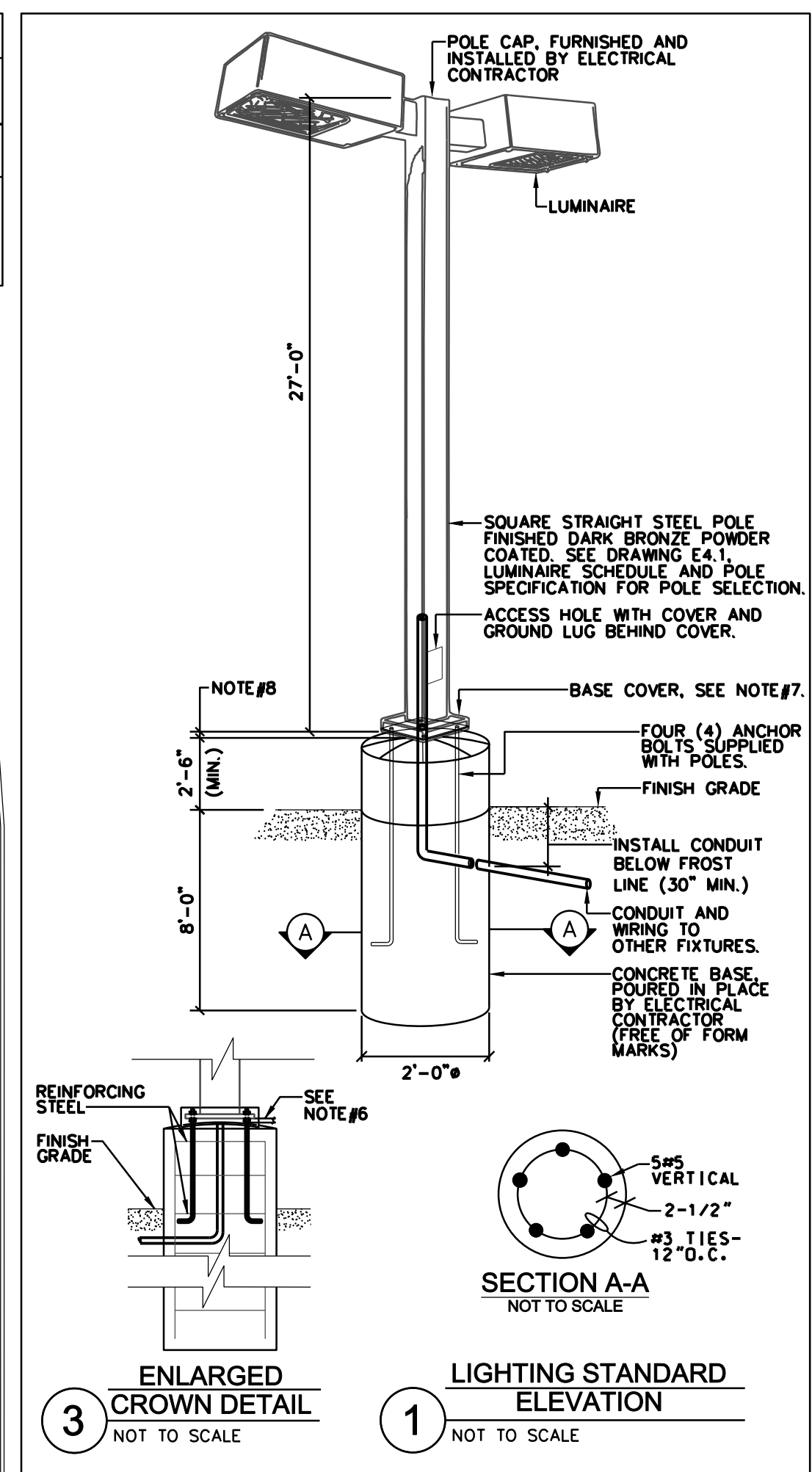


- BILL OF MATERIALS:**
- BAT HANDLE SWITCH, HEAVY DUTY, SCREW TERMINAL, 20A, 125VAC, HUBBELL CAT. #HBL21 WITH SILICON RUBBER BOOT, HUBBELL CAT. #SSB1.
  - NEMA 1 ENCLOSURE, HOFFMAN CAT. #ASE4X4X3.
  - NEMA 3R ENCLOSURE, HOFFMAN CAT. #ABR8R8R WITH PANEL CAT. #AB8R8P. ENCLOSURE SHALL BE PAINTED BY SIGN CONTRACTOR TO MATCH COLOR OF COLUMN.

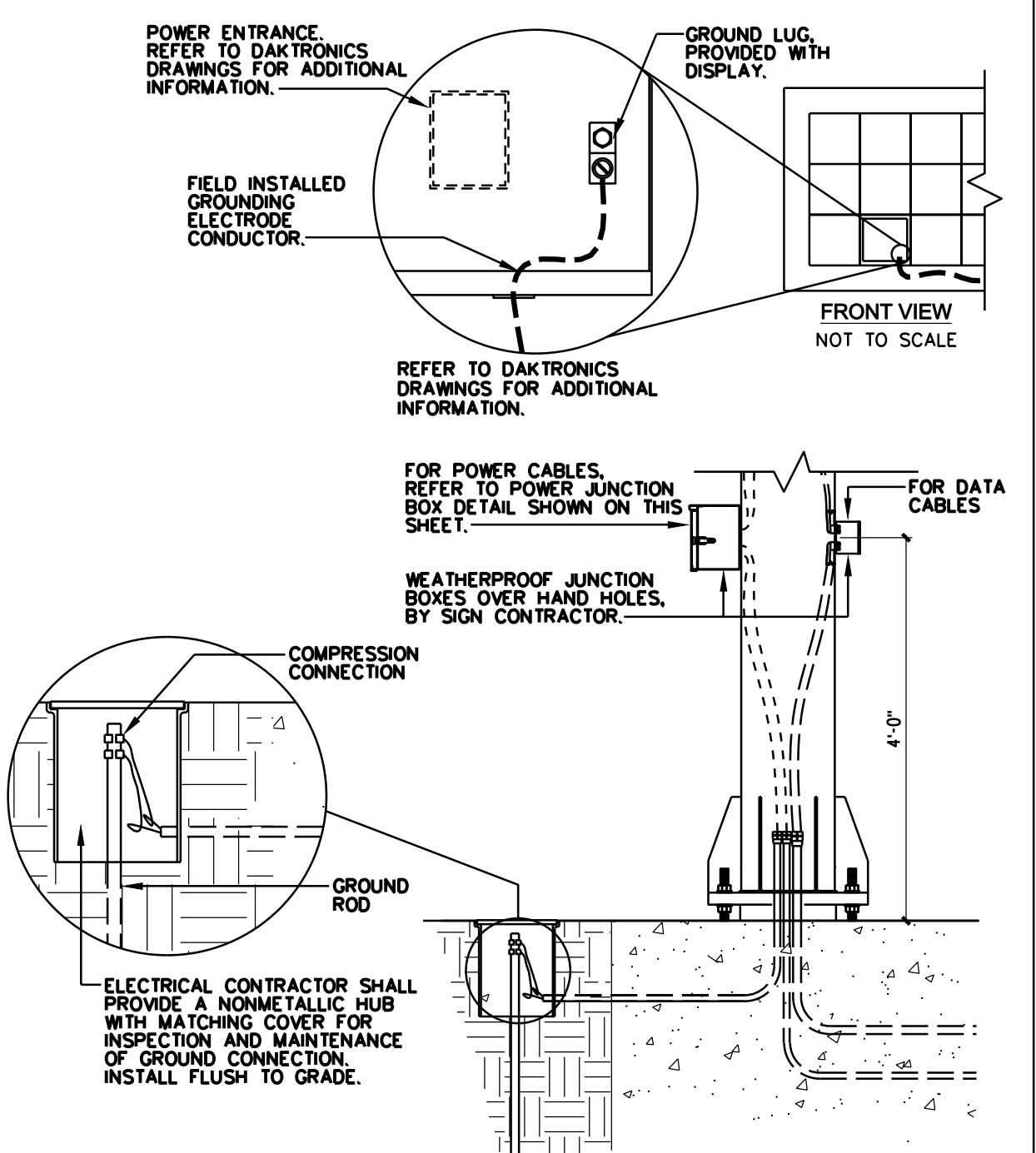


- NOTES:**
- APPLIES ONLY TO STORE WITH READERBOARDS NOT LARGER THAN 3'-8" x 10'-11" AND WITH STANDARD SIZE PRIMARY PANEL.
  - ALL CONDUCTORS SHALL BE PROVIDED WITH 7'-0" OF SLACK ABOVE FOUNDATION FOR FINAL CONNECTION BY SIGN CONTRACTOR. ALL CONDUCTORS TO RUN CONCEALED.
  - CONDUCTORS MUST BE IDENTIFIED BY ELECTRICAL CONTRACTOR WITH THE FOLLOWING TAGS:
    - PRIMARY PANEL
    - READERBOARD SIDE 1
    - READERBOARD SIDE 2
  - ALL MATERIALS SHOWN AND NOTED SHALL BE FURNISHED, ASSEMBLED, INSTALLED, AND WIRED BY THE SIGN CONTRACTOR.
  - DATA CABLE, ROUTED VIA NONMETALLIC FLEXIBLE CONDUIT, BY SIGN CONTRACTOR.
  - ALL WORK SHALL COMPLY WITH ALL NATIONAL, STATE AND LOCAL CODES, ORDINANCES, ETC.

- NOTES:**
- THE SITE LIGHTING IS BASED ON:
    - ☑ LUMARK (COOPER LIGHTING)
  - FOR WALGREENS STANDARD PYLON SIGN, PROVIDE (1) 20A, 120V CIRCUIT FROM PANEL LPSP-30 TO PYLON SIGN FOR PRIMARY PANEL (2) 2'-8" x 1'-2", REFER TO PRIMARY PANEL ELECTRICAL DATA SHOWN ON THIS DRAWING. LED READERBOARD POWER REQUIREMENTS SHALL BE BASED ON LED READERBOARD PANEL ELECTRICAL DATA SHOWN ON THIS DRAWING. PROVIDE A SEPARATE 1" DIAMETER PVC CONDUIT FOR EACH LED READERBOARD BRANCH CIRCUIT. LED READERBOARD BRANCH CIRCUIT CONDUIT SIZES SHALL BE SHOWN ON THIS DRAWING.
  - SEE LUMINAIRE SCHEDULE ON DRAWING E4.1 FOR LUMINAIRE INFORMATION.
  - NOT USED
  - PROVIDE A SEPARATE 1" DIAMETER PVC CONDUIT TO EACH PYLON SIGN TO SEPARATE DATA CABLE AND POWER CIRCUITS. 2'-0" SEPARATION SHALL BE MAINTAINED BETWEEN POWER AND DATA CONDUITS. RUN DATA CONDUIT (WITH #12 WIRE FOR PULL STRING) TO OFFICE SPACE. SEE DRAWING E1.1 ETHERNET PYLON DATA CABLES TO BE FURNISHED AND INSTALLED BY WALGREENS CONTRACTOR.
  - THE SITE LIGHTING POLE SHALL BE USED WITH A WIND SPEED OF:
    - ☑ 90 MPH AND BELOW
  - PROVIDE CROWN ON TOP OF CONCRETE BASE TO COMPLETELY SHED WATER.
  - 1/2" (MIN.) AIR GAP SPACE BETWEEN TOP OF CONCRETE CROWN AND BOTTOM OF POLE BASE PLATE FOR VENTILATION.
  - CONTROL SCHEDULE GROUP #8 OF DRAWING E2.1A CONTROLS LIGHTS REQUIRED TO ILLUMINATE PATH OF TRAVEL FROM STORE ENTRANCE TO THE DESIGNATED EMPLOYEE PARKING SPACES. SELECTION OF POLES IS BASED ON THE FOLLOWING LOGIC:
    - POLE #1 SHOULD BE CLOSEST TO STORE ENTRANCE.
    - POLES #2 AND #3 SHOULD LIGHT A PATH TO THE EMPLOYEE PARKING SPACES WHICH ARE TYPICALLY THE MOST DISTANT SPACES FROM THE ENTRANCE.
    - FOR NON-PROTOTYPICAL SITES, CONSULT WITH THE WALGREENS PROJECT ARCHITECT TO DETERMINE WHICH POLES SHALL BE PART OF CONTROL GROUP #8. IN THE CASE OF 24-HOUR STORES THE SAME LOGIC SHOULD BE APPLIED AS THE 24-HOUR DESIGNATION MAY CHANGE IN THE FUTURE.
  - ALL WORK SHOWN SHALL COMPLY WITH ALL NATIONAL, STATE AND LOCAL CODES, ORDINANCES, ETC.



**CONTRACTOR'S NOTE:**  
 GENERAL CONTRACTOR TO INSTALL POLE BASES FOR POLE UNITS #4 AND #9 AS CLOSE TO THE CURB AS POSSIBLE TO AVOID INTERFERENCE WITH EXISTING UNDERGROUND UTILITIES. E.C. TO RUN UNDERGROUND ELECTRICAL CONDUITS OUTSIDE OF EXISTING UTILITY EASEMENT FIELD VERIFY AND COORDINATE PRIOR TO ALL INSTALLATIONS.



- NOTES:**
- GROUND ROD SHALL BE COPPER, MINIMUM SIZE 5/8" x 8'-0" IN LENGTH-BY ELECTRICAL CONTRACTOR.
  - GROUNDING ELECTRODE CONDUCTOR SIZE SHALL NOT BE LESS THAN #8 AWG. IT SHALL BE ATTACHED TO GROUND ROD WITH COMPRESSION TYPE CONNECTOR.
  - GROUNDING ELECTRODE CONDUCTOR SHALL BE RUN INSIDE SIGN COLUMN OR POLE (SEE DETAIL), AND TERMINATED TO THE GROUND LUG ON REAR OF DISPLAY. SEPARATE GROUNDING ELECTRODE CONDUCTOR SHALL BE PROVIDED FOR THE SECOND DISPLAY. BOTH DISPLAYS SHALL SHARE THE SAME ROD(S). FOR EXISTING INSTALLATIONS, GROUNDING ELECTRODE CONDUCTOR COULD BE RUN ENCLOSED IN A CONDUIT ALONGSIDE THE SIGN COLUMN.
  - GROUND ELECTRODE SHALL HAVE AN IMPEDANCE OF 10 OHMS OR LESS TO GROUND. MORE THAN ONE GROUND ELECTRODE MAY BE REQUIRED TO ACHIEVE THIS.
  - ALL MATERIALS AND INSTALLATION SHALL BE FURNISHED BY ELECTRICAL CONTRACTOR UNLESS NOTED OTHERWISE.
  - INSTALLATION SHALL SATISFY NEC AND LOCAL CODE REQUIREMENTS.

**Camburas & Theodore, Ltd.**  
 Architecture | Planning | Interiors | Engineering  
 2454 E. Dempster St., Des Plaines, IL  
 Tel (847) 298-1525 Fax (847) 298-0228  
 www.camburasandtheodore.com

PROJECT NO. 91126746  
 PROJECT TYPE

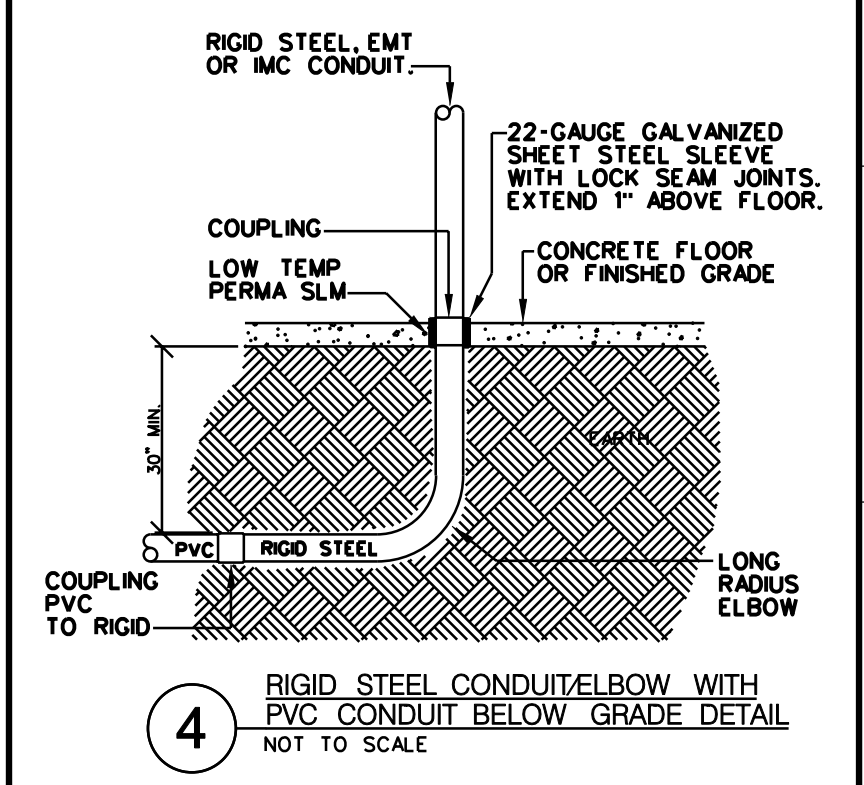
DRAWINGS/SPECIFICATIONS BY:  
 WALGREENS' CONSULTANT  
 LANDLORD'S CONSULTANT

ALL CONSTRUCTION WORK, UNLESS NOTED OTHERWISE, BY:  
 WALGREENS' CONTRACTOR  
 LANDLORD'S CONTRACTOR (TURNKEY CONSTRUCTION)

STORE	BUILDING
NEW <input checked="" type="checkbox"/>	NEW <input checked="" type="checkbox"/>
REMODELING <input type="checkbox"/>	EXISTING <input type="checkbox"/>
RELOCATION <input type="checkbox"/>	NEW SHELL ONLY <input type="checkbox"/>
OTHERS <input type="checkbox"/>	

2010 CRITERIA CONSTRUCTION BULLETINS

C.B.#	TITLE
b10-014	SITE LIGHTING POLE BASE DIMENSION CORRECTION
b10-025	REPLACE MORTAR AND PESTLE SIGNAGE WITH "W" SIGNAGE
b10-030	ELECTRICAL UPDATES



**NLD HOLDINGS HUDSON, LLC.**  
 50 S. 6TH ST. SUITE 1480  
 MINNEAPOLIS, MN 55402

**Walgreens**  
 Facilities Planning And Design 106 Wilmet Rd., Deerfield, IL 60015  
 Tel (847) 940-2500

NO.	DATE	BY	DESCRIPTION	CONST
3	7/28/11	SD	ISSUE FOR CONSTRUCTION	
1	7/7/11	SD	OWNER COMMENT REVISIONS	
2	6/22/11	SD	ISSUE FOR PERMIT & WAG CHECKSET	
1	6/13/11	SD	ISSUE FOR CLIENT REVIEW	

REVISIONS

CERTIFICATION AND SEAL

STORE NUMBER 15121  
 PROJECT NAME  
 WALGREENS  
 141 CARMICHAEL ROAD  
 HUDSON, WI

DRAWING TITLE  
 SITE ELECTRICAL PLAN

CADD PLOT:	SCALE:	DRAWING NO.
VOID PLOT:	DRAWN BY:	E0.1
SUPERSEDES PLAN DATED:	DATE:	4/8/11
	REVIEWED BY:	