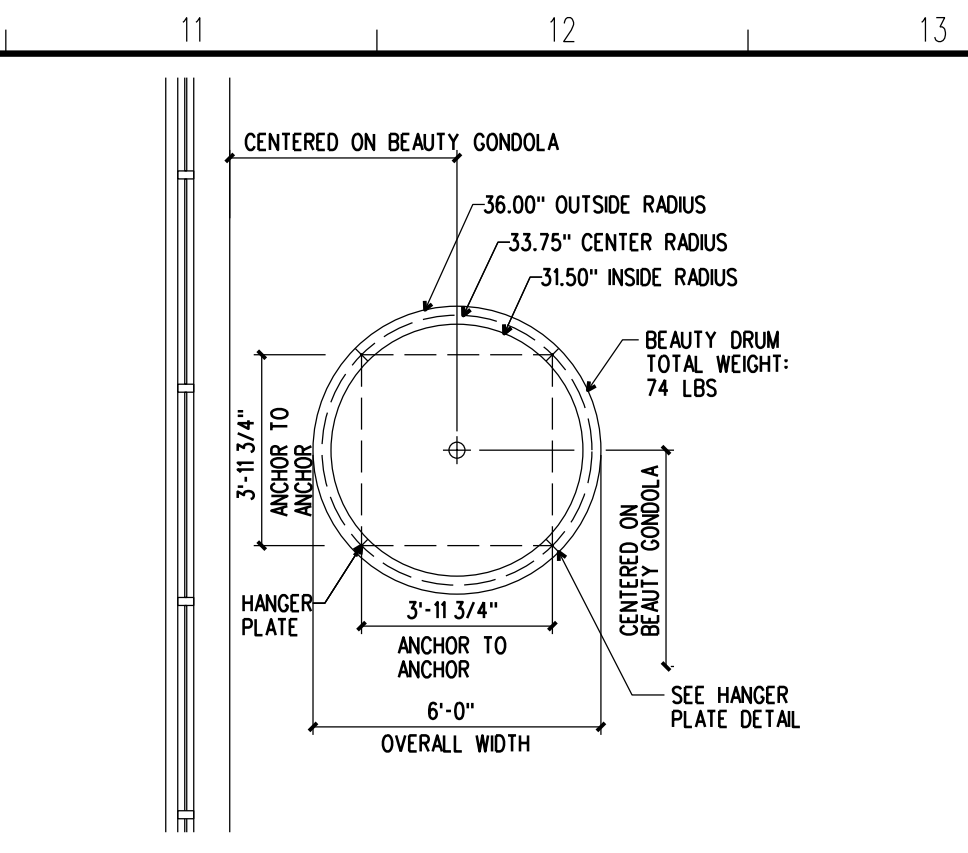
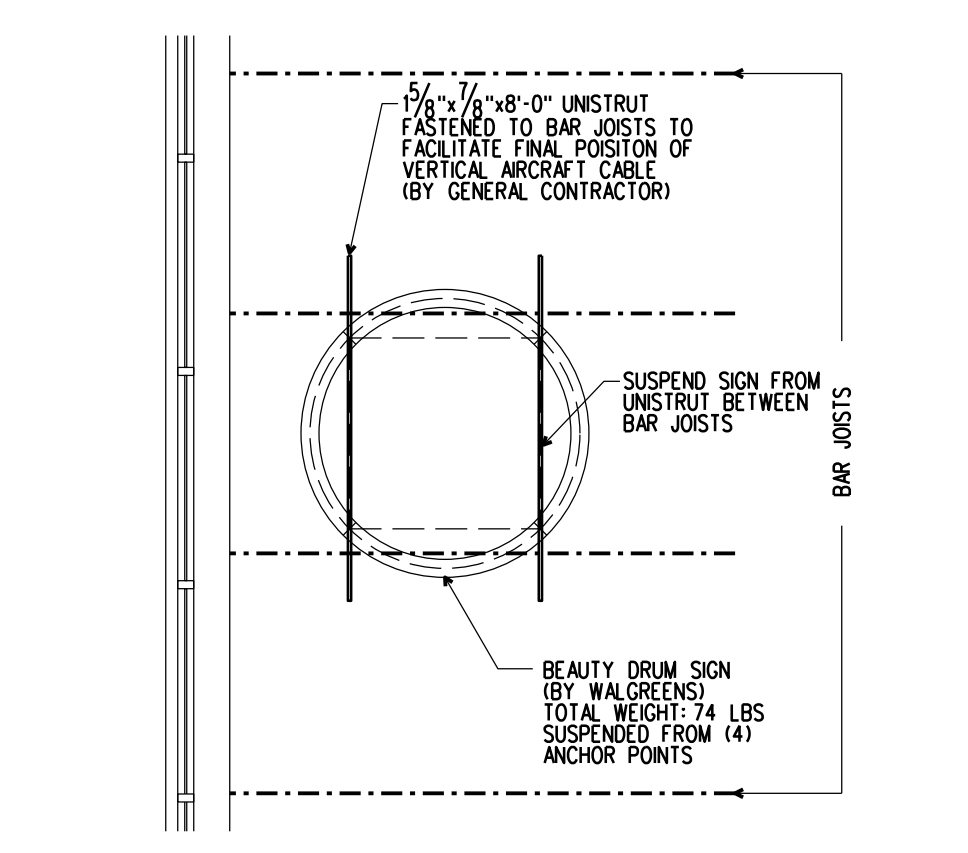


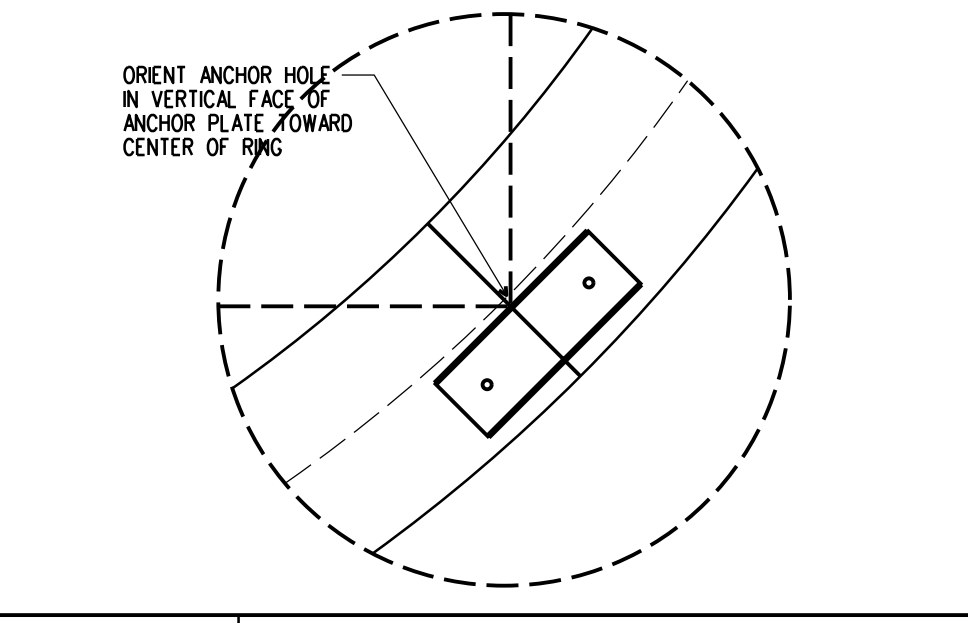
**A-1 REFLECTED CEILING PLAN**  
SCALE: 1/8" = 1'-0"



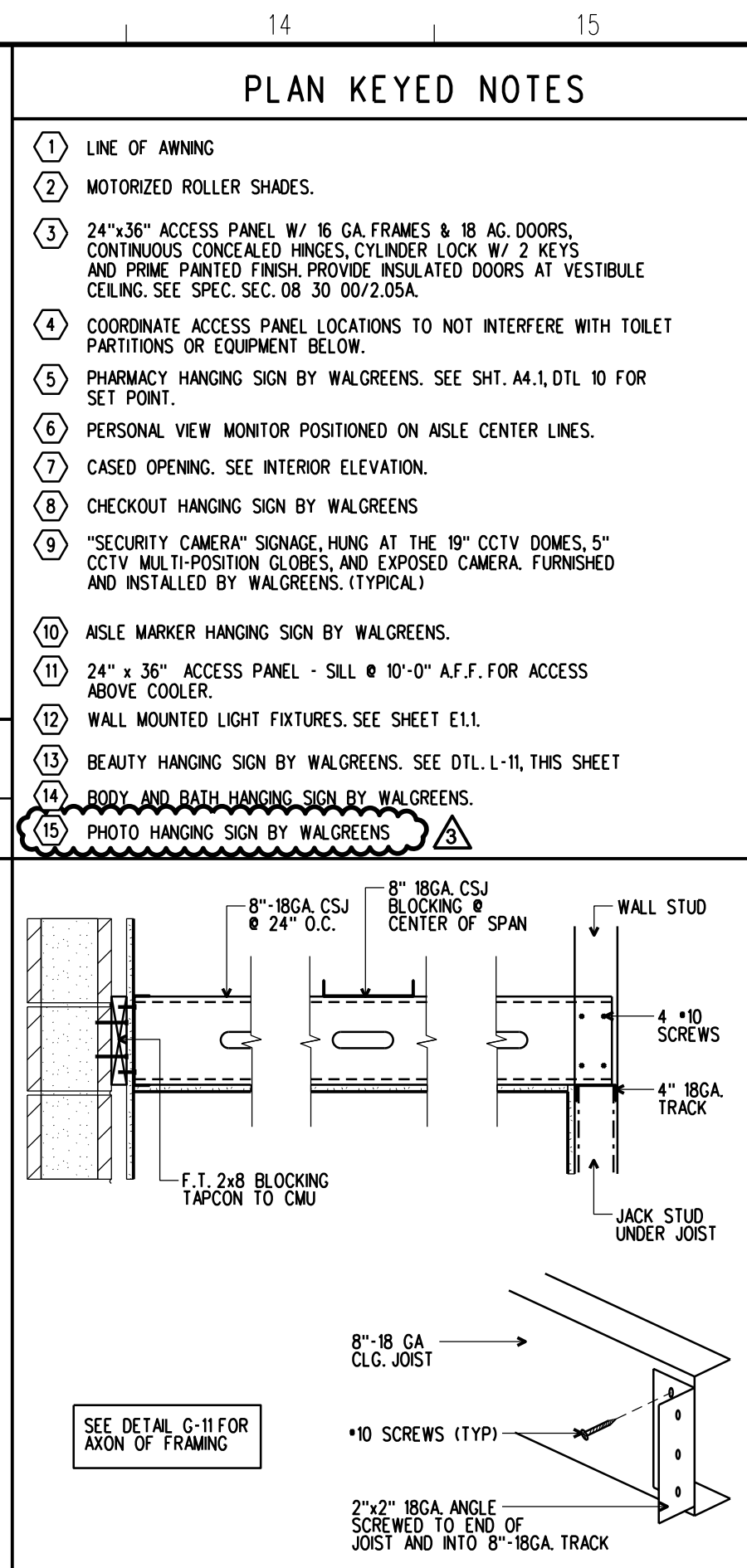
**L-11 BEAUTY SIGN PARTIAL PLAN**  
SCALE: 1/4" = 1'-0"



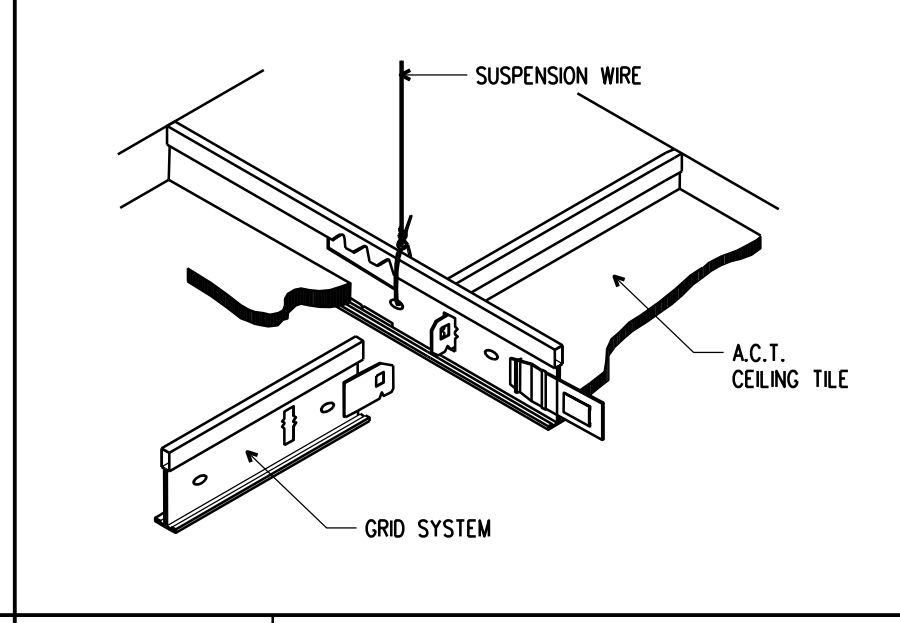
**H-11 BEAUTY SIGN FRAMING PLAN**  
SCALE: 1/4" = 1'-0"



**E-11 HANGER PLATE DETAIL**  
NO NONE



**H-13 JOIST FRAMING DETAILS**  
N.T.S. TOILET AND EMPLOYEE ROOM CEIL.



**E-13 SUSPENSION SYSTEM DTL.**  
NO NONE

Camburas & Theodore, Ltd.  
Architecture | Planning | Interiors | Engineering  
2454 E. Dempster St., Des Plaines, IL  
Tel (847) 298-1525 Fax (847) 298-0228  
www.camburasandtheodore.com

**PROJECT NO. 91126746**

**GENERAL NOTES**

- GENERAL SALES AREA CEILING SHALL BE EXPOSED. LIGHTING FIXTURES INSTALLED AT A MINIMUM OF 13'-0" AFF. THERE SHALL BE A 2'-0" MINIMUM CLEARANCE TO THE BOTTOM OF ANY ROOF STRUCTURE FOR LIGHTING, SPRINKLER PIPING, AND MECHANICAL EQUIPMENT.
- THE LIGHT FIXTURE SPACING SHALL BE AT A MAXIMUM OF 11'-0" CENTER TO CENTER OF LIGHT FIXTURE TO CENTER OF LIGHT FIXTURE FOR ALL CEILING HEIGHTS.
- N/A
- IDENTIFY CEILING LAYOUT STARTING POINT TO ENSURE THAT LIGHT FIXTURES ARE CONTINUOUS AND UNINTERRUPTED BY COLUMNS.
- SUPPLY AIR DIFFUSERS ARE TO BE LOCATED MINIMUM 2'-0" AWAY FROM GENERAL SALES AREA LIGHTS.
- CEILING SHALL NOT BE USED FOR SUPPORTING ANY BUILDING INSULATION. ROOF CONSTRUCTION SHALL PROVIDE THE REQ'D INSULATION VALUE. CEILING LIGHTS ARE TO BE WIRED TO BAR JOIST MEMBERS AT THE DIAGONAL CORNERS. DO NOT ATTACH CEILING COMPONENTS TO ROOF DECK!
- ALL CEILING HEIGHTS, CEILING MATERIALS, AND LIGHT FIXTURE SPACINGS ARE AS SHOWN ON REFLECTED CEILING PLAN. ANY DEVIATION FROM THESE REQUIREMENTS MUST BE APPROVED BY WALGREENS IN WRITING.
- N/A
- LOCKABLE ACCESS PANEL REQUIRED IN ALL ROOMS WITH CYP. BD. CEILINGS.
- N/A
- LOCATE ACCESS PANELS AWAY FROM PUBLIC PHONES.

**LEGEND**

	SUPPLY AIR		EXIT LIGHT
	RETURN AIR		EMERGENCY LIGHTING
	EXHAUST FAN		CANDORY LIGHT
	SPEAKER		SPEAKER W/ INTEGRATED VOLUME CONTROL
	EXIT SIGN		PERSONAL VIEW MONITOR
	FLUORESCENT LIGHTING SEE SHEET E0.1		TRACK LIGHTING
	SUSPENDED LIGHT FIXTURE SEE SHEET E0.1		RECESSED LIGHTING

**NLD HOLDINGS HUDSON, LLC.**  
50 S. 6TH ST. SUITE 1480  
MINNEAPOLIS, MN 55402

**Walgreens**  
Facilities Planning And Design 106 Wilmot Rd., Deerfield, IL 60015  
Tel (847) 940-2500

NO.	DATE	BY	DESCRIPTION
3	8/23/11	SD	WAG CHECKSET REVISIONS
3	7/26/11	SD	ISSUE FOR CONSTRUCTION
3	7/26/11	SD	OWNER COMMENT REVISIONS
2	8/22/11	SD	ISSUE FOR PERMIT & WAG CHECKSET
1	6/13/11	SD	ISSUE FOR CLIENT REVIEW

**REVISIONS**

**CERTIFICATION AND SEAL**

**STORE NUMBER 15121**

**PROJECT NAME**  
WALGREENS  
141 CARMICHAEL ROAD  
HUDSON, WI

**DRAWING TITLE**  
REFLECTED CEILING PLAN (OPEN CEILING)

<b>CADD PLOT:</b>	<b>SCALE:</b>	<b>DRAWING NO.</b>
<b>VOID PLOT:</b>	<b>DRAWN BY:</b> SD	<b>A1.2</b>
<b>SUPERSEDES PLAN DATED:</b>	<b>DATE:</b> 4/8/11	<b>OF DWGS.</b>
	<b>REVIEWED BY:</b>	